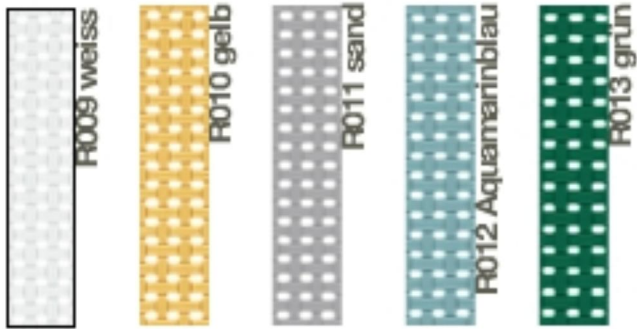
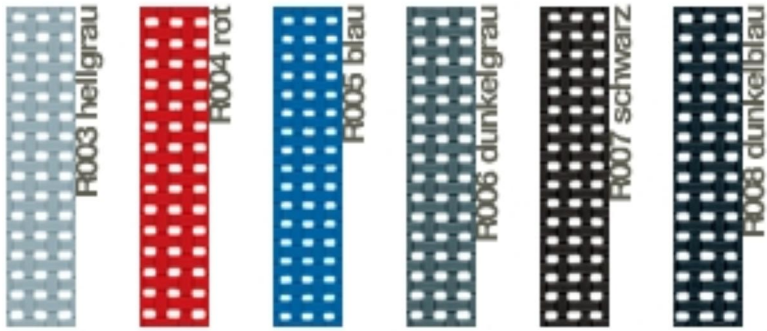


highframe 416 design Alberto Meda

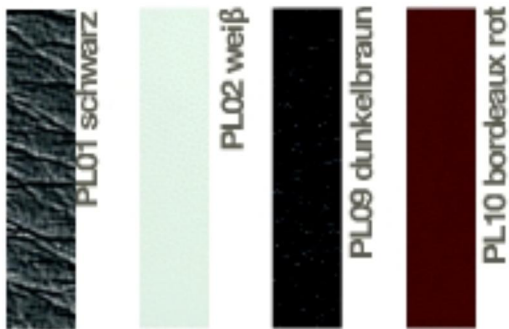


Stapelbarer Stuhl mit Gestell aus fließgepresstem Aluminium und Aluminium-Druckguss-elementen, Sitz und Rückenlehne aus feuerhemmendem PVC-beschichtetem Polyesternetzgewebe oder aus schwarzem Leder.

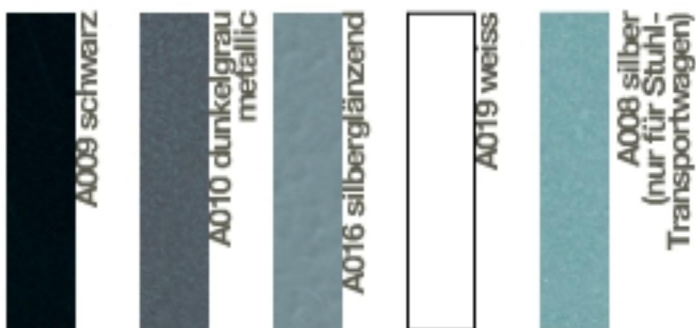
Sitz und Rückenlehne aus Netz



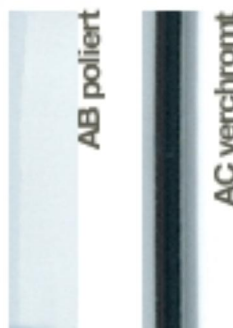
Sitz und Rückenlehne aus Leder



Gestell lackiert



Gestell Aluminium



Certificazioni

Registro

4194/1

4194/2

Prova Verifica

leg forward static load test

leg sideways static load test

Norma

ANSI BIFMA X5.1-1993/19

ANSI BIFMA X5.1-1993/20

Data

14/07/2000

14/07/2000

Posizione

1L

1L

16507/5	Arm and wing sideways static load test	EN 1728/2000	21/03/2001	1L
16507/4	arm downwards static load test	EN 1728/2000	21/03/2001	1L
16507/3	arm impact test	EN 1728/2000	21/03/2001	1L
16507/1	seat impact test	EN 1728/2000	21/03/2001	1L
16507/2	back impact test	EN 1728/2000	21/03/2001	1L