



PL STOR 60
Design by Manuel Vivian

Collection consisting of ceiling or wall lamps with metal frame and removable, washable elastic fabric covering. Available in several colours and sizes. Screw fitting light source.

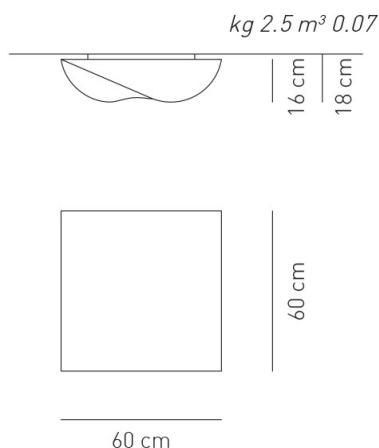
Typology: CEILING - WALL LAMP

Ratings

- E27
- Diffused light
- Surface installation over holes
- Supply voltage ~220-240V
- Switch mode: on-off
- Steel frame, painted

Product code composition

STORMY / tessuto **INCLUSO** - applicazione a soffitto o a parete
/ fabric **INCLUDED** - application: both as ceiling or wall lamp



| Type | Article | Colours | Finish | Source |
|------|---------|----------|----------------|---|
| PL | STOR 60 | BC white | XX white metal | E27 2 x Max 16W LED or 2 x Max 70W halo |
| | | AV ivory | | |

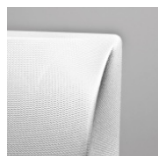
CE IP20 **+LED**

example composition code | PL | STOR60 | AV | XX | E27

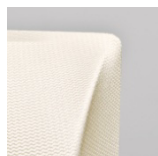
for additional fabrics please refer to our pricelist or contact our representatives

Removable and washable elastic fabric
Composition 85% polyamide, 15% elastane
Weight 255/285 gr/m² - test method ISO 3801
Glow wire 750°C

Available lampshade colors



BC
White



AV
Ivory pattern

EELc (Energy Efficiency Label compatibility): E, D, C, B, A, A+, A++

PLSTOR60__XXE27

CUSTOMER _____

NOTES _____

Luminous flux (lm) and efficacy (lm/W) for all built-in LED luminaires is estimated based on nominal ratings of the LED sources. Technical data could be subject to alteration without notice. Axo Light does not provide legal guarantee for the accuracy of this data sheet.