

IN HARMONY WITH YOUR FEELINGS





# DUETTO®









DUETTO®

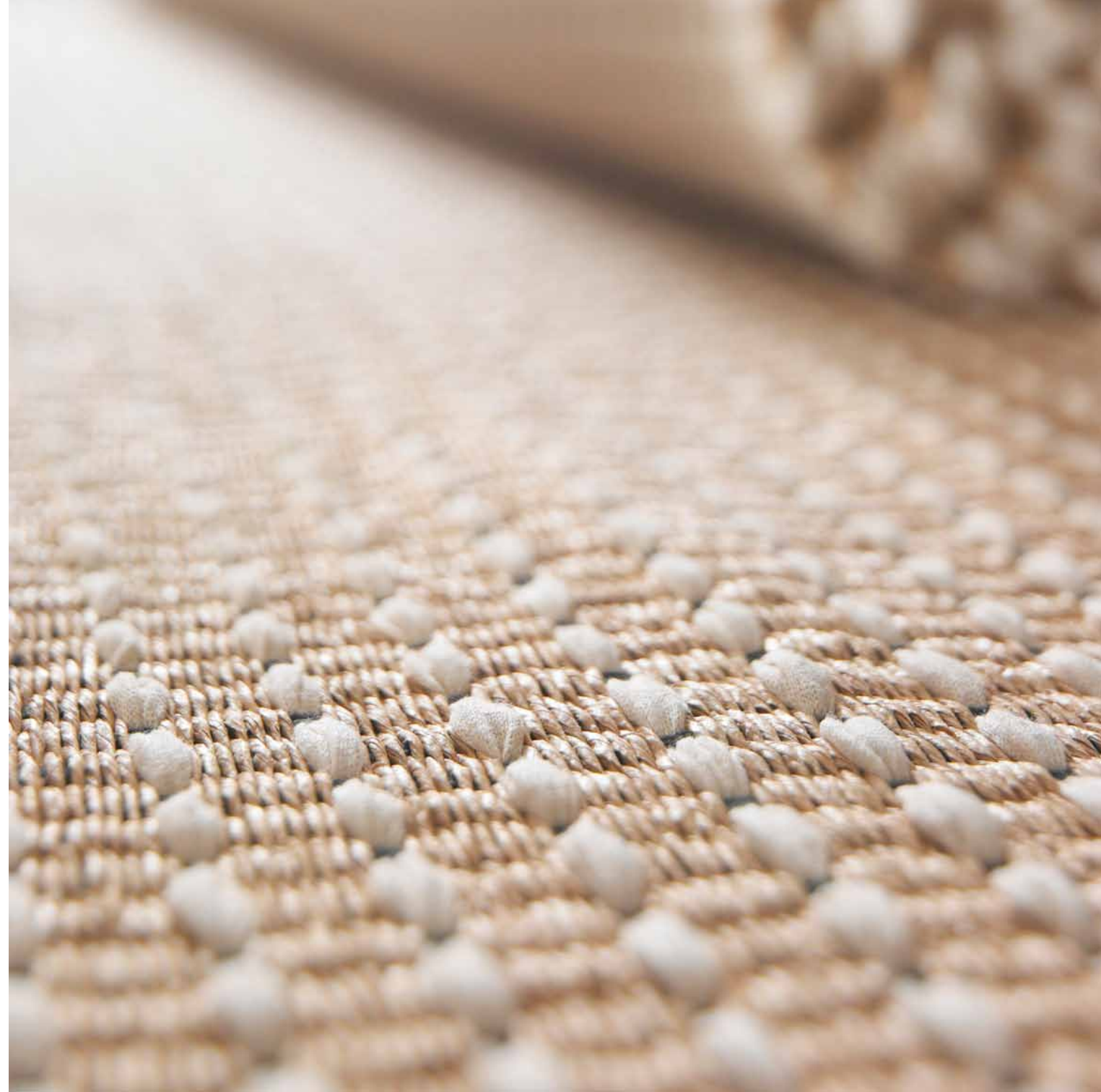


DUETTO®





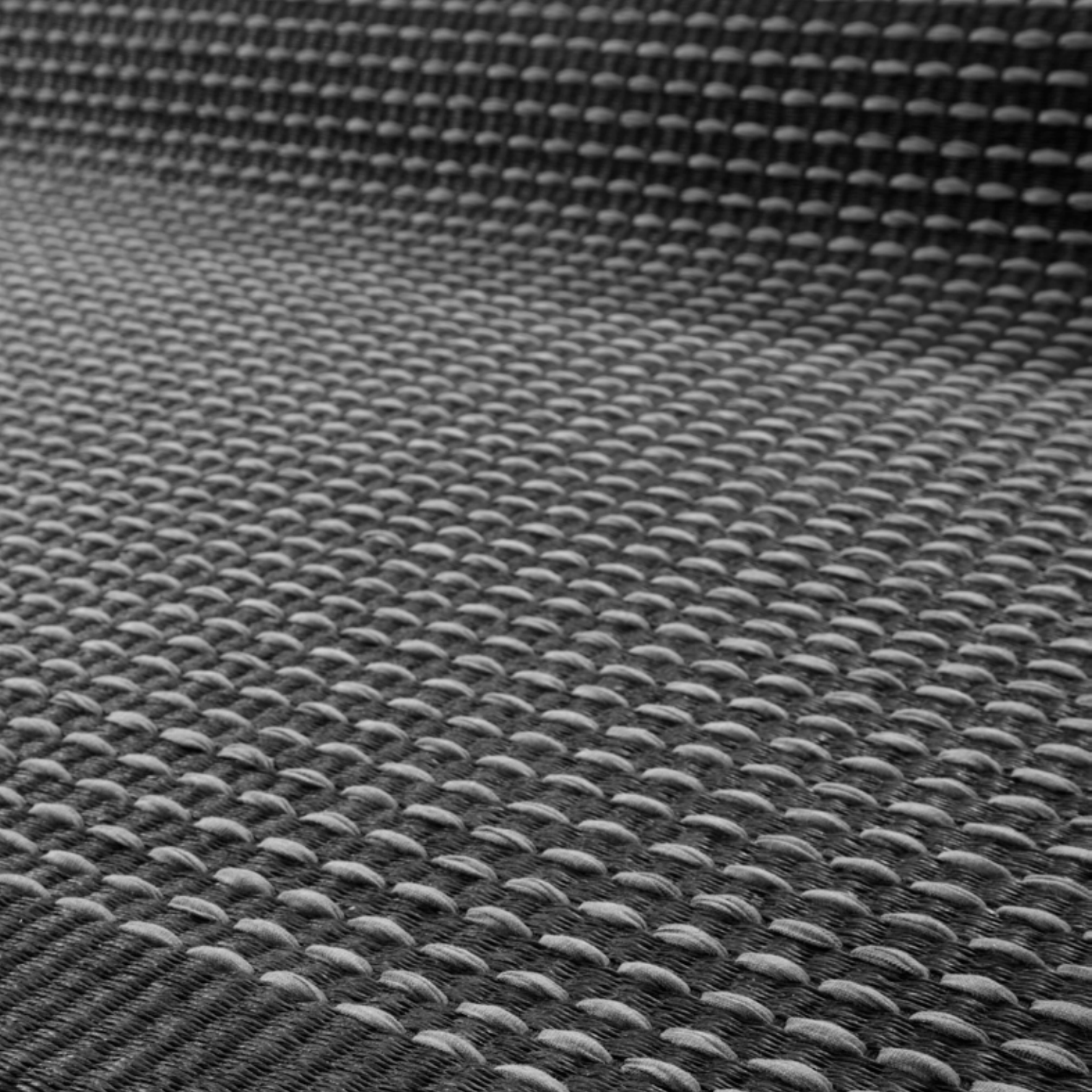
**ENCORE<sup>®</sup>**



ENCORE<sup>2</sup>







2010

reddot design award  
product design

**ENCORE**®





MINOR<sup>®</sup>E





*aqua*<sup>®</sup>



2007

reddot design award

product design



fenni prize 07

best design young girls  
HONORARY MENTION





**POLKA**<sup>®</sup>









# 201

TEMPO



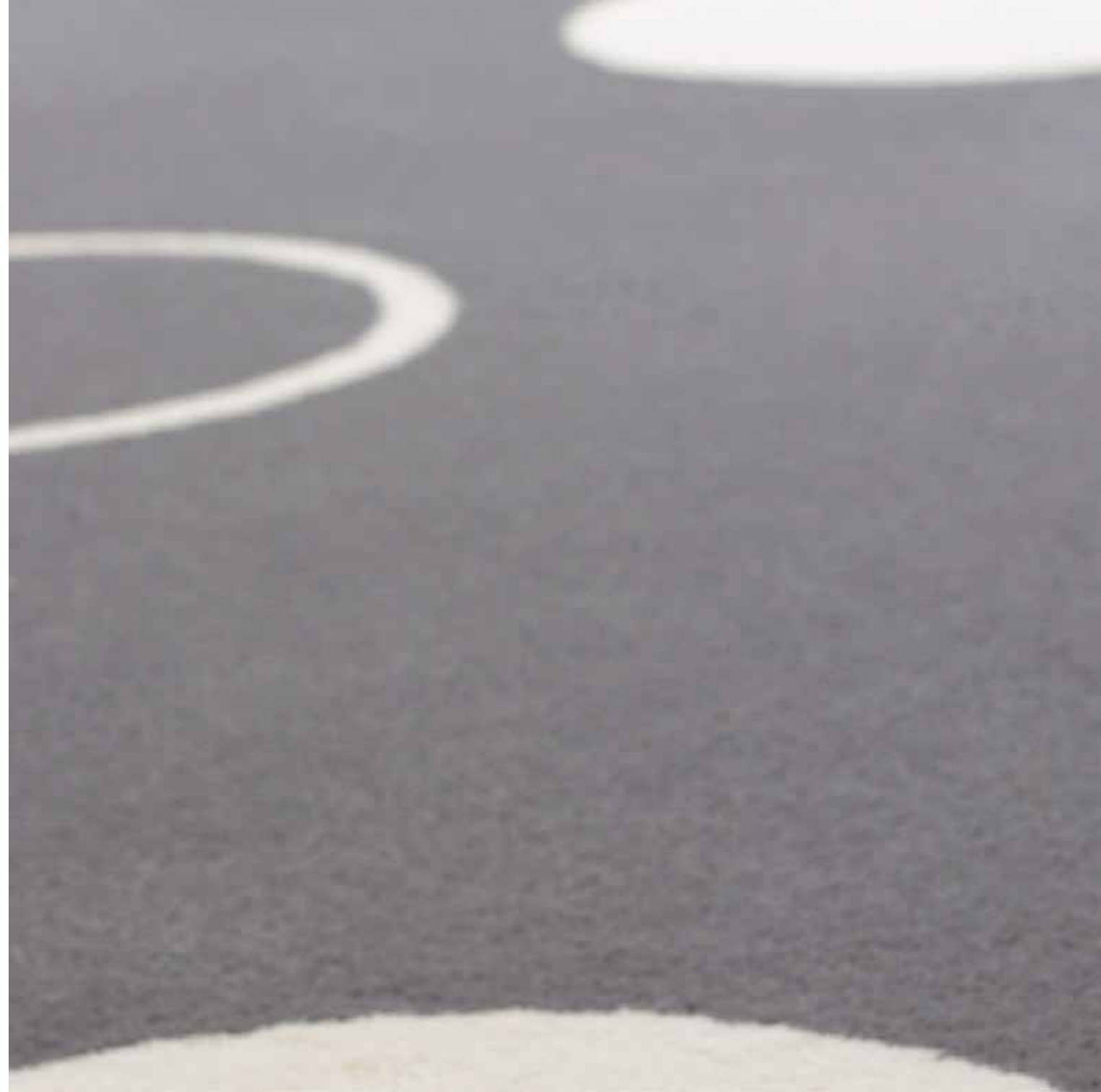
# 2022

TEMPO



# 2003

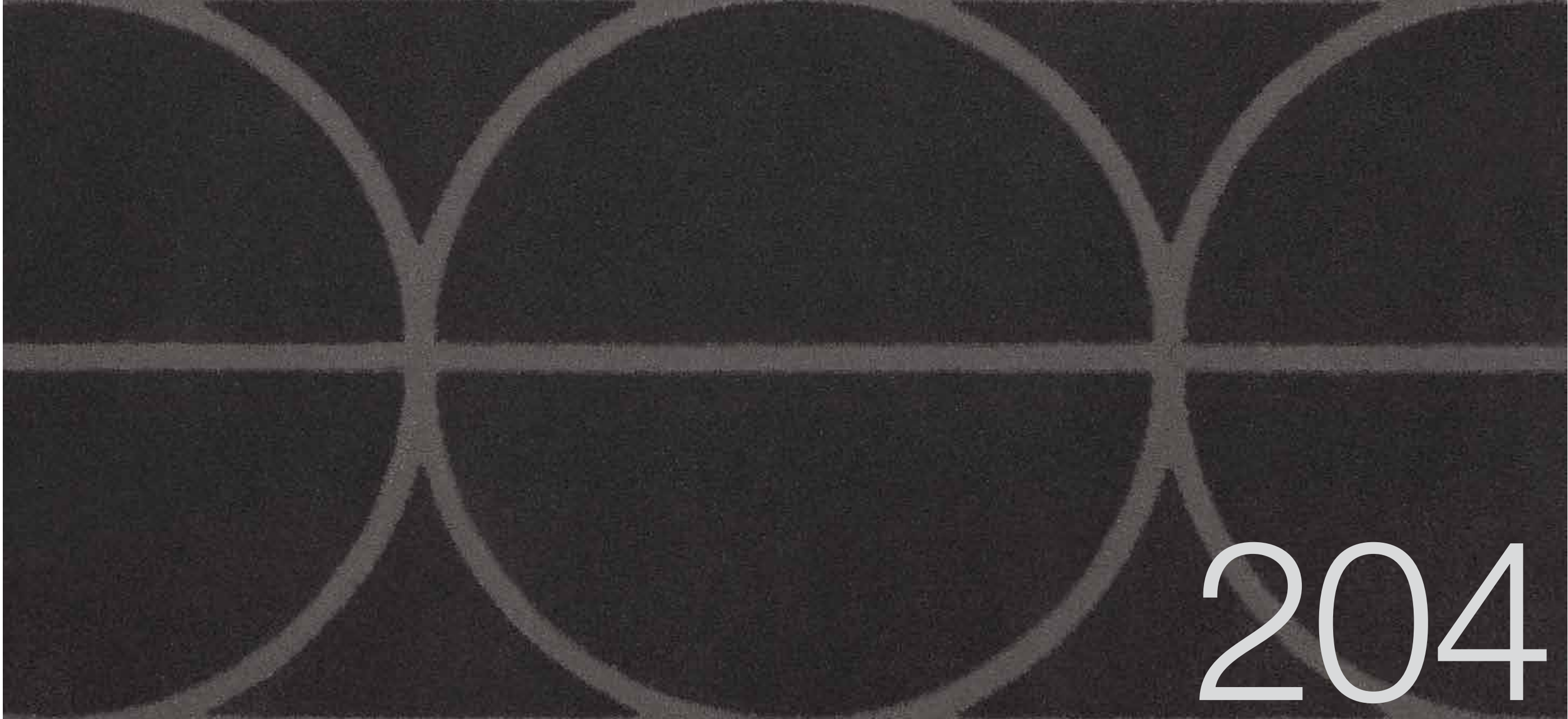
TEMPO



# 204

TEMPO

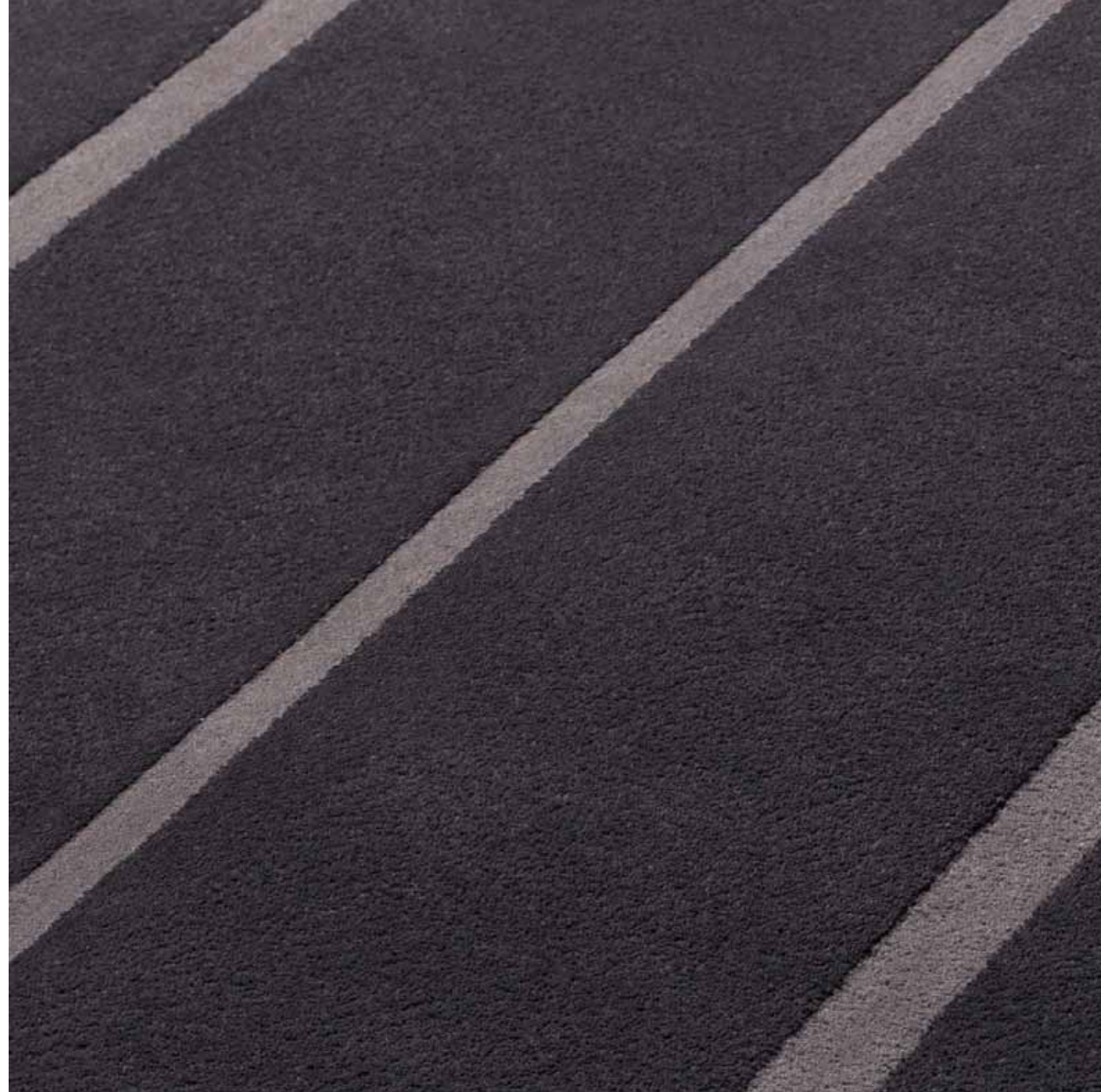




204

# 205

TEMPO





# 2006

TEMPO





2017  
TEMPO





2008  
TEMPO



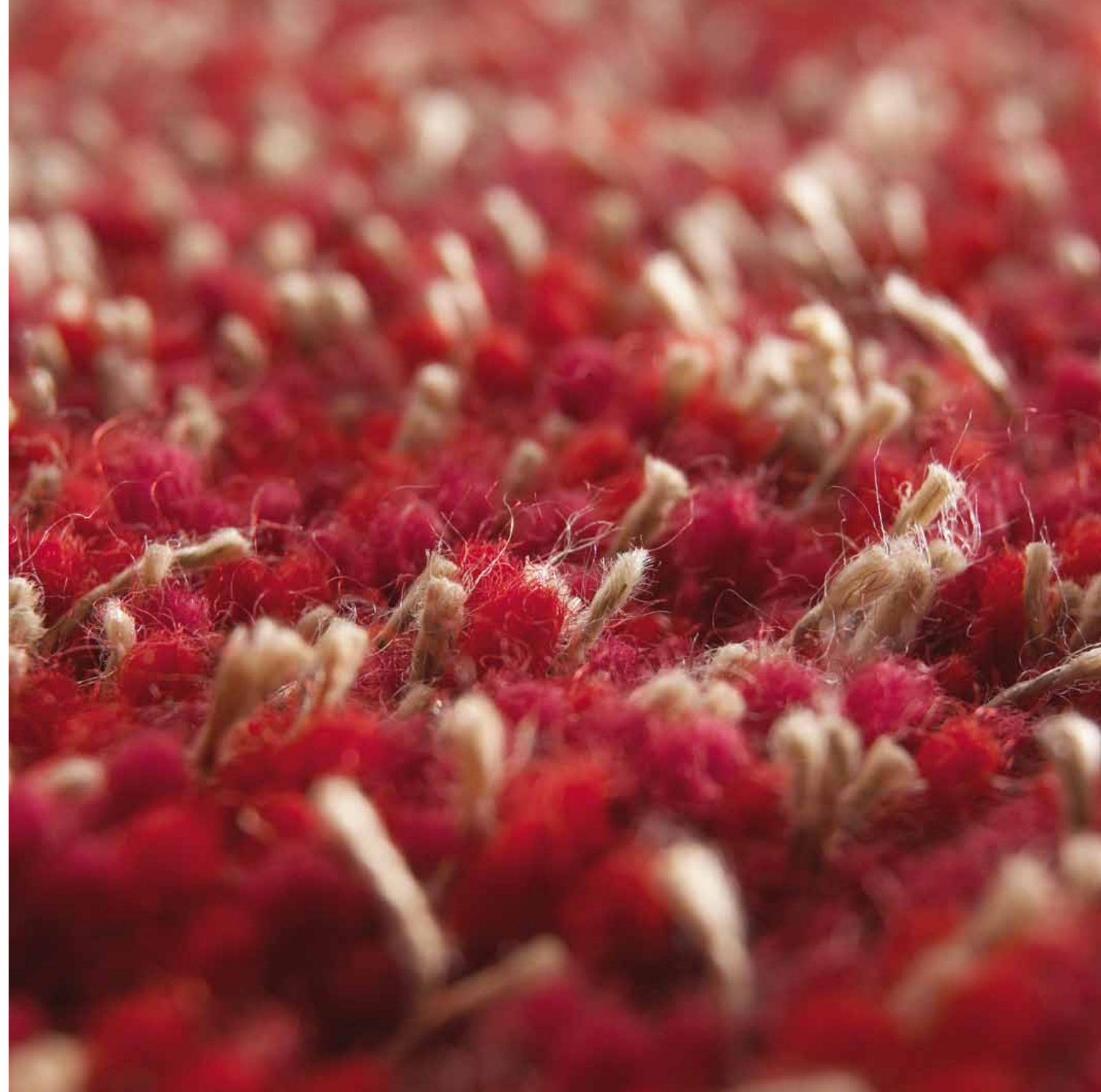
209





# 2009

TEMPO







# 210

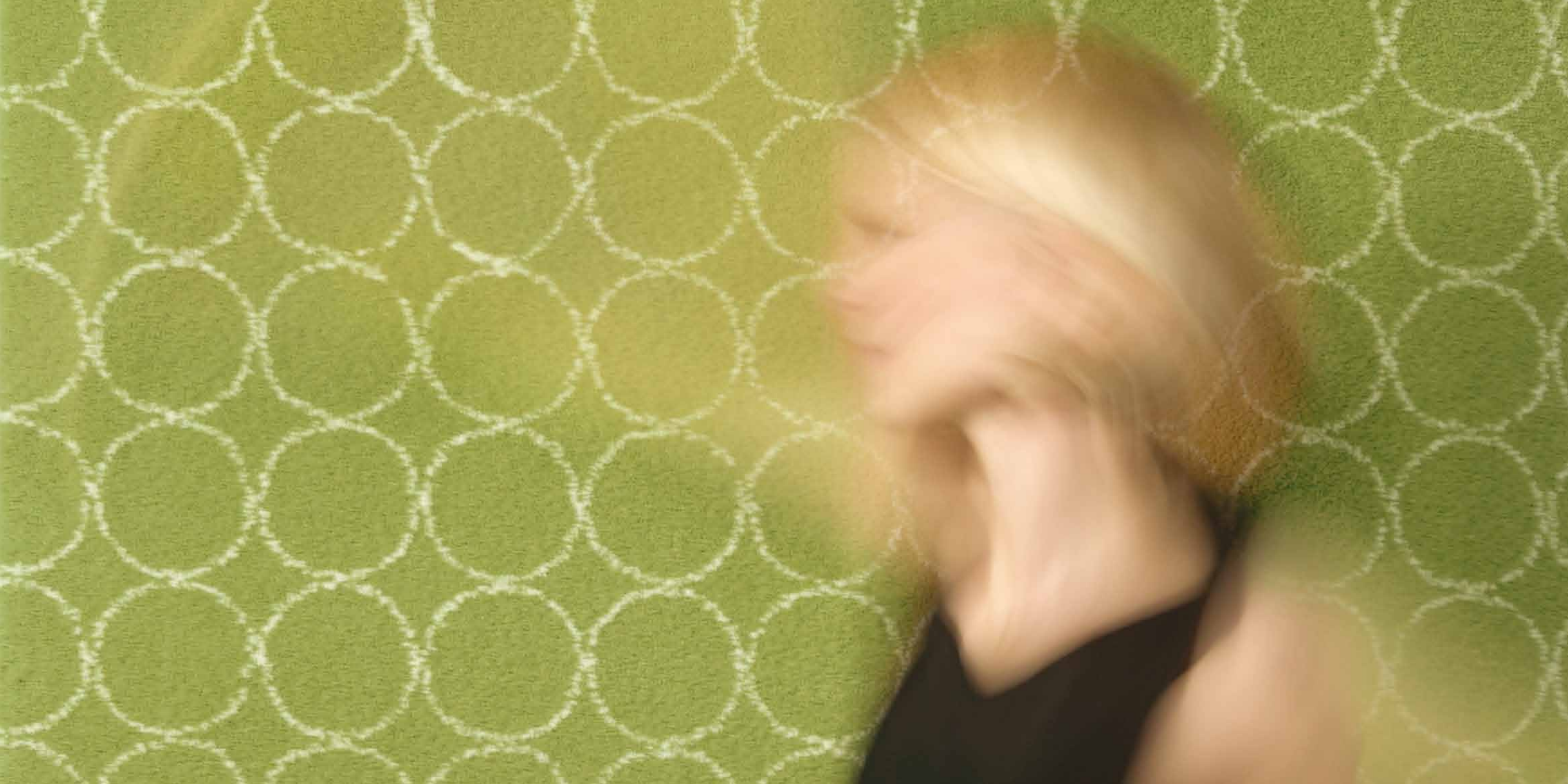
TEMPO®

# 211

TEMPO

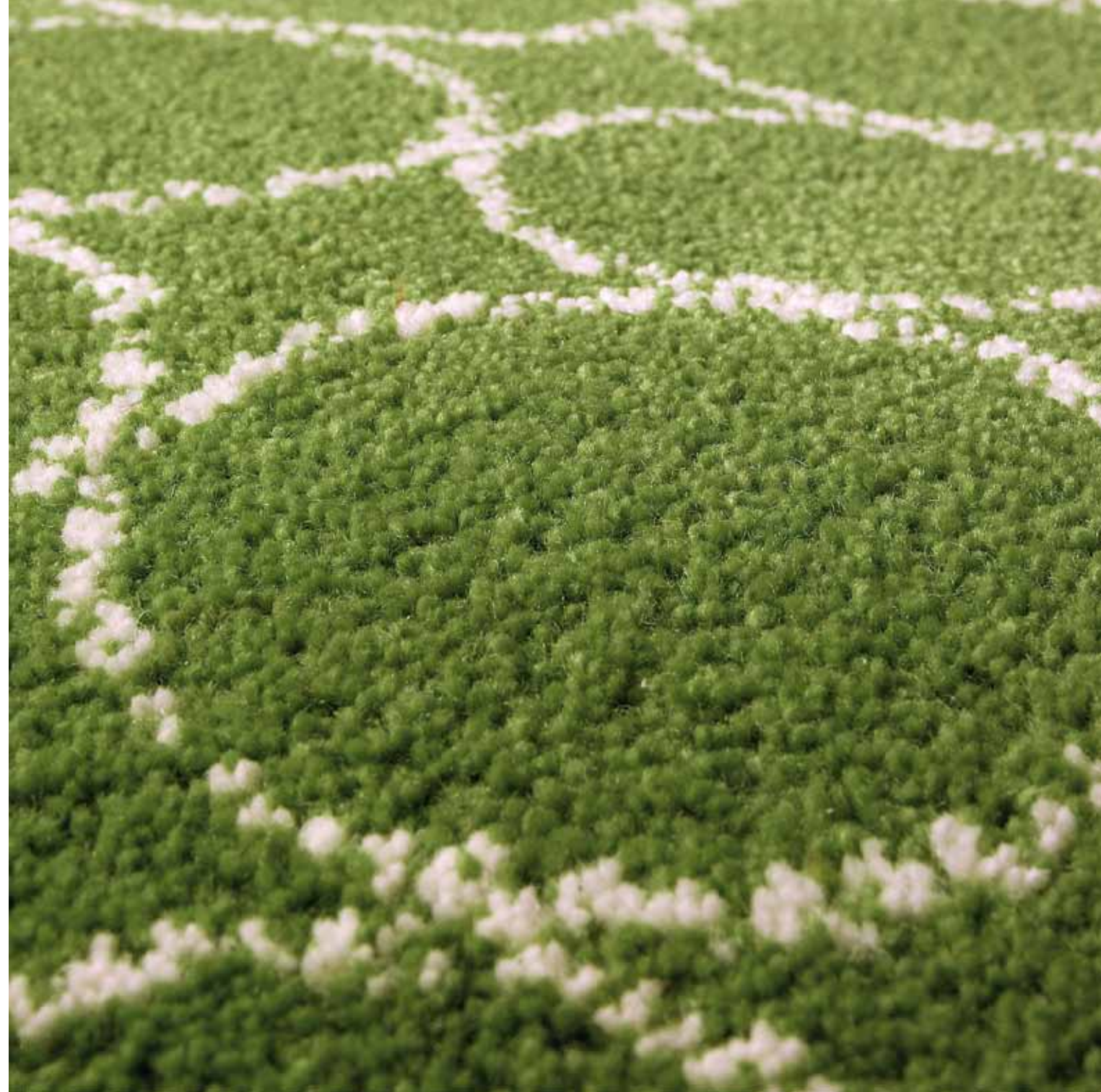








BALLO®BALLO







MAJ  
®  
ORE





**TWEED®**





pop<sup>®</sup>

*fino*<sup>®</sup>





mio®





CARTA®



bianco®





HANNA KORVELA

HANNA **KORVELA**

IN HARMONY WITH YOUR FEELINGS









natural white (001)      black (002)      green (003)



terra (004)      blue (005)      yellow (006)



grey (007)      dark blue (008)      red (009)



reddish brown (010)      brown (011)      nutria (012)



aubergine (015)      orange (022)      blueberry (024)



dark green (030)      cream (034)      stone (035)



turquoise (036)

## DUETTO®

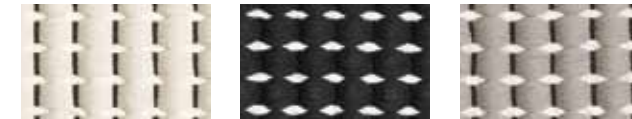
**product**  
hand woven rug, 100% cotton and paper yarn

**sizes**  
custom sizes according to customer's requirements, maximum width 3.00 m  
length tolerance 3 %

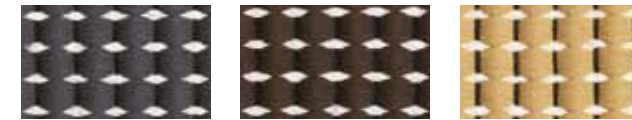
**colours**  
for cotton 19 different colours, paper yarn of natural colour, warp black

**places of use**  
the rug can be used on both sides  
durability according to standard TSL 23-017:  
suitable to all rooms at home, to public premises  
smooth surface and dust repellent materials  
make this an excellent rug for allergic homes

**awards**  
Red Dot: Best of the Best award 1997



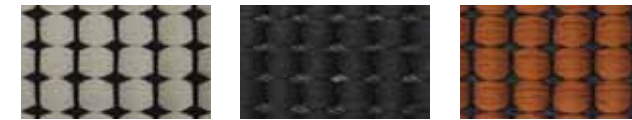
natural white (001)      black (002)      stone (035)



grey (007)      brown (011)      yellow (006)



nutria (012)      cream (034)



natural white (001)      black (002)      terra (004)



grey (007)      reddish brown (010)      brown (011)



nutria (012)      stone (035)

## DUETTO®

**product**  
hand woven rug, 100% cotton and paper yarn

**sizes**  
custom sizes according to customer's requirements, maximum width 3.00 m  
length tolerance 3 %

**colours**  
for cotton 19 different colours, paper yarn of white, warp black

**places of use**  
the rug can be used on both sides  
durability according to standard TSL 23-017:  
suitable to all rooms at home, to public premises  
smooth surface and dust repellent materials  
make this an excellent rug for allergic homes

## DUETTO®

**product**  
hand woven rug, 100% cotton and paper yarn

**sizes**  
custom sizes according to customer's requirements, maximum width 3.00 m  
length tolerance 3 %

**colours**  
for cotton 19 different colours, paper yarn of black, warp black

**places of use**  
the rug can be used on both sides  
durability according to standard TSL 23-017:  
suitable to all rooms at home, to public premises  
smooth surface and dust repellent materials  
make this an excellent rug for allergic homes





natural white (001)      black (002)      green (003)



terra (004)      blue (005)      yellow (006)



grey (007)      dark blue (008)      red (009)



reddish brown (010)      brown (011)      nutria (012)



aubergine (015)      orange (022)      blueberry (024)



dark green (030)      cream (034)      stone (035)



turquoise (036)

## ENCORE®

**product**  
woven rug, 100% cotton and paper yarn

**sizes**  
standard sizes, other sizes by order, maximum width 3,00 m  
length tolerance 3%

**colours**  
for cotton 19 different colours, paper yarn of natural colour, warp black

**places of use**  
the rug can be used on both sides  
durability according to standard TSL 23-017:  
suitable to all rooms at home, to public premises  
smooth surface and dust repellent materials  
make this an excellent rug for allergic homes



natural white (001)      black (002)      stone (035)



grey (007)      brown (011)      yellow (006)



nutria (012)      cream (034)



natural white (001)      black (002)      terra (004)



grey (007)      reddish brown (010)      brown (011)



nutria (012)      stone (035)

## ENCORE<sup>2</sup>

**product**  
woven rug, 100% cotton and paper yarn

**sizes**  
standard sizes, other sizes by order, maximum width 3,00 m  
length tolerance 3%

**colours**  
for cotton 19 different colours, paper yarn white, warp black

**places of use**  
the rug can be used on both sides  
durability according to standard TSL 23-017:  
suitable to all rooms at home, to public premises  
smooth surface and dust repellent materials  
make this an excellent rug for allergic homes

## ENCORE<sup>3</sup>

**product**  
woven rug, 100% cotton and paper yarn

**sizes**  
standard sizes, other sizes by order, maximum width 3,00 m  
length tolerance 3%

**colours**  
for cotton 19 different colours, paper yarn black, warp black

**places of use**  
the rug can be used on both sides  
durability according to standard TSL 23-017:  
suitable to all rooms at home, to public premises  
smooth surface and dust repellent materials  
make this an excellent rug for allergic homes



**awards**  
Red Dot Design award, product design 2010



natural white (101)



lavender (102)



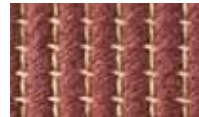
grey (103)



brown (104)



green (105)



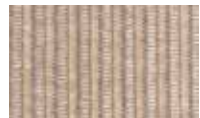
red (106)



sand (107)



white (301)



beige (302)



grey (303)



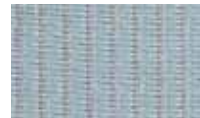
brown (304)



black (305)



red (306)



turquoise (307)

## MINORE®

### product

hand woven rug, 100% pure new wool and paper yarn

### sizes

custom sizes according to customer's requirements, maximum width 2.00 m  
length tolerance 3%

### colours

for wool 7 different colours, paper yarn of natural colour, warp natural colour

### places of use

the rug can be used on both sides  
durability according to standard TSL 23-017:  
suitable to all rooms at home, to public premises



### product

woven water resistant rug, 100% synthetic fibre

### sizes

custom sizes according to customer's requirements  
maximum width 1,65 meters

### colours

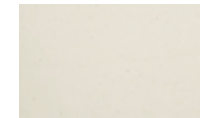
7 colours

### places of use

suitable to all rooms at home  
thanks to water repellent material a perfect rug for areas like  
bathrooms, kitchens and balconies

### awards

honorary mention, Fennia Prize - Good design grows global 2007  
Red Dot Design award, product design 2007



natural white (001)



black (002)



green (003)



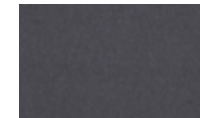
terra (004)



blue (005)



yellow (006)



grey (007)



dark blue (008)



red (009)



reddish brown (010)



brown (011)



nutria (012)



aubergine (015)



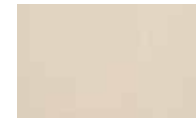
orange (022)



blueberry (024)



dark green (030)



cream (034)



stone (035)



turquoise (036)

## POLKA®

### product

hand woven rug, 100% cotton

### sizes

custom sizes according to customer's requirements, maximum width 2.00 m  
length tolerance 3%

### colours

colour range of Duetto and Encore rugs, 19 colours  
warp beige

### models

two models in the collection:  
one-coloured and two-coloured with 20 cm stripes  
rug is available with edging or fringes at the ends





white 101 - 201



brown 102 - 202



grey 103 - 203



black 104 - 204



red 105 - 205



blue 106 - 206

## TEMPO<sup>®</sup> 201, 202

### product

handtufted rug, pile material 100% IWS -standard pure new wool  
primary backing; polyester, bonding; latex, pile density: 39 300 stitches  
pile height: pattern 15 mm, back 12 mm, pile weight: 3300 gr/sqm

Rugs are treated with dirt repellent treatment,  
when needed fire resistance according to IMO653 standard

### sizes

standard sizes, other sizes by order  
size tolerance 3%

### colours

6 colours, colour can also be chosen from Tempo standard colours, 34 colour alternatives

### places of use

durability according to standard TSL 23-017; heavy contact use



white-grey 101 - 103



white-beige 101 - 216



grey-white 103 - 101



beige-white 216 - 101

## TEMPO<sup>®</sup> 203

### product

handtufted rug, pile material 100 % IWS- standard pure new wool  
primary backing: polyester, bonding; latex, pile density: 39 300 stitches / sqm  
pile height: 15 mm, pile weight: 3 300 gr / sqm

Rugs are treated with dirt repellent treatment,  
when needed fire resistance according to IMO653 standard

### sizes

standard sizes, other sizes by order  
size tolerance 3%

### colours

4 colours, colour can also be chosen from Tempo standard colours, 34 colour alternatives

### places of use

durability according to standard TSL 23-017; heavy contract use



white-beige 101 - 208



black-grey 104 - 203

## TEMPO<sup>®</sup> 204, 205

### product

handtufted rug, pile material 100 % IWS- standard pure new wool  
primary backing: polyester, bonding; latex, pile density: 39 300 stitches / sqm  
pile height: pattern 12 mm, base 15 mm, pile weight: 3 300 gr / sqm

Rugs are treated with dirt repellent treatment,  
when needed fire resistance according to IMO653 standard

**sizes** standard sizes, other sizes by order, size tolerance 3%

### colours

2 colours, colour can also be chosen from Tempo standard colours,  
34 colour alternatives

### places of use

durability according to standard TSL 23-017; heavy contract use



white 101



brown 102



grey 103



greyish black 104



red 105



blue 106



brownish red 107



natural white 201



dark brown 202



dark grey 203



black 204



dark red 205



dark blue 206

## TEMPO<sup>®</sup> 206

### product

handtufted rug, pile material 100 % IWS- standard pure new wool  
primary backing: polyester, bonding; latex, pile density: 39 300 stitches / sqm  
pile height: pattern 12 mm, base 15 mm, pile weight: 3 300 gr / sqm

Rugs are treated with dirt repellent treatment,  
when needed fire resistance according to IMO653 standard

### sizes

standard sizes, other sizes by order  
size tolerance 3%

### colours

13 colours, colour can also be chosen from Tempo standard colours,  
34 colour alternatives

### places of use

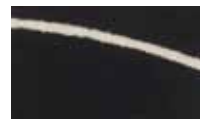
durability according to standard TSL 23-017; heavy contract use



red-white 105 - 101



white-red 101 - 105



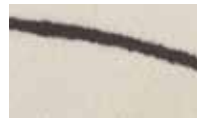
black-white 204 - 101



white-black 101 - 204



grey-white 203 - 101



white-grey 101 - 203

## TEMPO<sup>®</sup> 207

### product

handtufted rya rug

pile material 100% IWS-standard pure new wool

primary backing; polyester, bonding; latex, pile density: 39 300 stitches / sqm

pile height pattern 12 mm, back 15 mm, pile weight: 3 300 gr / sqm

Rugs are treated with dirt repellent treatment, when needed fire resistance according to IMO653 standard

### sizes

standard sizes, custom sizes according to customer's requirements, also round maximum width 4,00 m, size tolerance 3%

### colours

6 colours, colour can also be chosen from Tempo standard colours, 34 colour alternatives

### places of use

durability according to standard TSL 23-017; heavy contract use



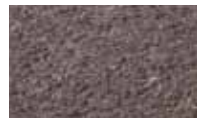
white 101



natural white 201



brown 202



grey 203



black 204

## TEMPO<sup>®</sup> 208

### product

handtufted rya rug

pile material 100% IWS-standard pure new wool and 100% linen

80% wool and 20% linen

primary backing; polyester, bonding; latex, pile density: 16 700 stitches / sqm

pile height 30 mm, pile weight: 2 900 gr / sqm

Rugs are treated with dirt repellent treatment, when needed fire resistance according to IMO653 standard

### sizes

custom sizes according to customer's requirements, also round maximum width 4,00 m, size tolerance 3%

### colours

5 colours, colour can also be chosen from Tempo standard colours, 34 colour alternatives, linen is same colour as wool

### places of use

homes and homelike spaces



white 101 - 201



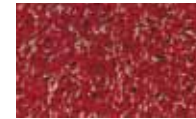
brown 202-217



grey 203-104



black 104 - 204



red 105-205



blue 106-206

## TEMPO<sup>®</sup> 209

### product

handtufted rya rug

pile material 100% IWS-standard pure new wool and 100% linen

80% wool and 20% linen

primary backing; polyester, bonding; latex, pile density: 16 700 stitches / sqm

pile height 30 mm, pile weight: 2 900 gr / sqm

Rugs are treated with dirt repellent treatment, when needed fire resistance according to IMO653 standard

### sizes

sizes by order, size tolerance 3%

### colours

6 colours, colour can also be chosen from Tempo standard colours, 34 colour alternatives, linen is natural colour

### places of use

homes and homelike spaces



light grey 103 - 215



beige 214 - 215



black 203 - 204



burgundy 107 - 221



orange 222 - 223



violet 224 - 225



turquoise 218 - 219



green 213 - 220

## TEMPO<sup>®</sup> 210

### product

handtufted rya rug

pile material 100% IWS-standard pure new wool and 100% linen

80% wool and 20% linen

primary backing; polyester, bonding; latex, pile density: 16 700 stitches / sqm

pile height 30 mm, pile weight: 2 900 gr / sqm

Rugs are treated with dirt repellent treatment, when needed fire resistance according to IMO653 standard

### sizes

sizes by order, size tolerance 3%

### colours

8 colours, colour can also be chosen from Tempo standard colours, 34 colour alternatives, linen is white

### places of use

homes and homelike public spaces





white 101

201 - 216

204 - 217

101 - 103

203 - 226

209 - 216

209 - 214

227 - 209 - 217

## TEMPO<sup>®</sup> 211

### product

handtufted rya rug  
 pile material 100% IWS-standard pure new wool and 100% linen  
 80% wool and 20% linen  
 primary backing; polyester, bonding; latex, pile density: 16 700 stitches / sqm  
 pile height 30 mm, pile weight: 2 900 gr / sqm

Rugs are treated with dirt repellent treatment,  
 when needed fire resistance according to IMO653 standard

### sizes

sizes by order, size tolerance 3%

### colours

8 colours, colour can also be chosen from Tempo standard colours,  
 34 colour alternatives

### places of use

homes and homelike public spaces



green-white 213 - 101



ochre-white 211 - 101



grey-white 103 - 101



red ochre-white 212 - 204



white-green 101 - 213



white-ochre 101 - 211



white-grey 101 - 103



white-red ochre 101 - 212



white 101



natural 101 - 215



light brown 202 - 215



light grey 103 - 226



yellow 211 - 215



brown 202 - 217



black 104 - 207

## BALLO<sup>®</sup> BALLO

### product

handtufted rug, pile material 100% IWS - standard pure new wool  
 primary backing; polyester, bonding; latex, pile density 52 500 stitches/sqm  
 pile height: 12 mm, pile weight: 3 300 g/sqm

Rugs are treated with dirt repellent treatment,  
 when needed fire resistance according to IMO653 standard

### sizes

standard sizes, other sizes by order, size tolerance 3%  
 diameter of the pattern 10 cm

### colours

8 colours, colour can also be chosen from Tempo standard colours,  
 34 colour alternatives

### places of use

durability according to standard TSL 23-017; heavy contract use



### product

handtufted rya rug  
 pile material 100% IWS-standard pure new wool and 100% linen  
 80% wool and 20% linen  
 primary backing; polyester, bonding; latex, pile density: 18 000 stitches / sqm  
 pile height 25/15 mm, pile weight: 2 300 gr / sqm

Rugs are treated with dirt repellent treatment,  
 when needed fire resistance according to IMO653 standard

### sizes

custom sizes according to customer's requirements, also round  
 maximum width 4,00 m, size tolerance 3%

### colours

7 colours, colour can also be chosen from Tempo standard colours,  
 34 colour alternatives

### places of use

homes and homelike public spaces

# TWEED®



white 101 - 215



beige 216 - 214



brown 209 - 214



grey 203 - 210



black 207 - 104

**product**

handtufted rug, pile material 100 % IWS- standard pure new wool  
 primary backing: polyester, bonding: latex, pile density: 42 360 stitches / sqm  
 pile height: pattern 13 mm, base 9 mm, pile weight: 2 300 gr / sqm

Rugs are treated with dirt repellent treatment,  
 when needed fire resistance according to IMO653 standard

**sizes**

standard sizes, size tolerance 3 %

**colours**

5 colours, colour can also be chosen from Tempo standard colours,  
 34 colour alternatives

**places of use**

durability according to standard TSL 23-017; heavy contract use

# pop®



white 101



grey 226



brown 217



black 204

**product**

handtufted wool rug 100% IWS-standard pure new wool, 100% linen  
 90% wool and 10% linen  
 primary backing: polyester, bonding: latex, pile density: 24 160 stitches / sqm  
 pile height 10 mm, pile weight: 2000 gr / sqm

Rugs are treated with dirt repellent treatment,  
 when needed fire resistance according to IMO653 standard

**sizes**

sizes by order, size tolerance 3%

**colours**

4 colours, colour can also be chosen from Tempo standard colours,  
 34 colour alternatives

**places to use**

homes and homelike public spaces

## Tempo standard wool colours



101



102



103



104



105



106



107



201



202



203



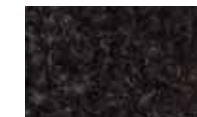
204



205



206



207



208



209



210



211



212



213



214



215



216



217



218



219



220



221



222



223



224



225

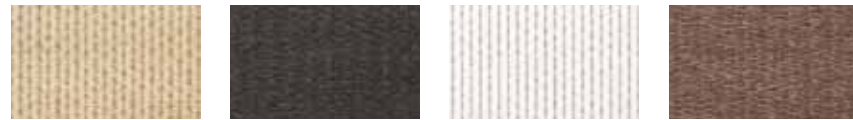


226

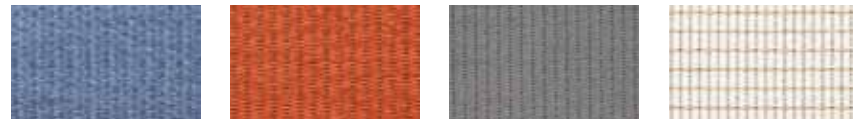


227





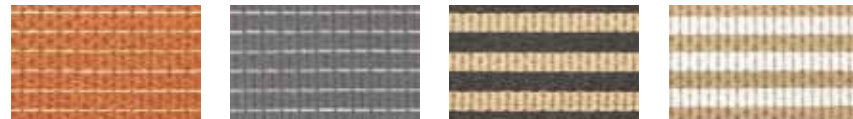
00-00 00-01 00-02 00-03



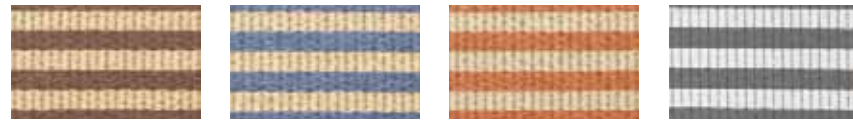
00-04 00-05 00-07 01-00



01-01 01-02 01-03 01-04



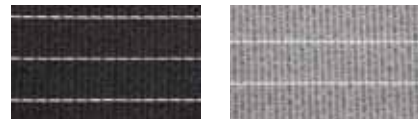
01-05 01-07 02-01 02-02



02-03 02-04 02-05 02-07



03-00 03-01 03-02 03-03



03-01-02 03-07-02

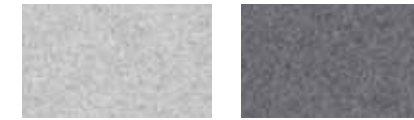
## CARTA®

**product**  
woven place mats / table runners, 100% paper yarn,  
in co-operation with Finnish Allergy and Asthma Federation

**sizes**  
place mat: 42 x 36 cm, 2 pc / pck  
table runner: 42 x 120 cm, 42 x 180 cm  
table runners are available in custom sizes also, length by  
every 10 cm, width 42 cm

**colours and models**  
4 different models  
colours for paper yarn are natural, black, white, brown,  
blue, orange, grey

**places of use**  
durability according to standard TSL 23-017: suitable to all  
rooms at home, to public premises



light grey 02 grey 03



black 04 brown 05



red 06

## mio®

**product**  
wool blanket, material 100% pure new wool

**sizes**  
125 x 150 cm

**colours**  
5 colours

**places of use**  
homes and public premises



## bianco®

**product**  
hand made candle of 100% specially cleaned stearine

**colour**  
white

**sizes**  
23 cm, 34 cm, 45 cm, 57 cm

IN HARMONY WITH YOUR FEELINGS



